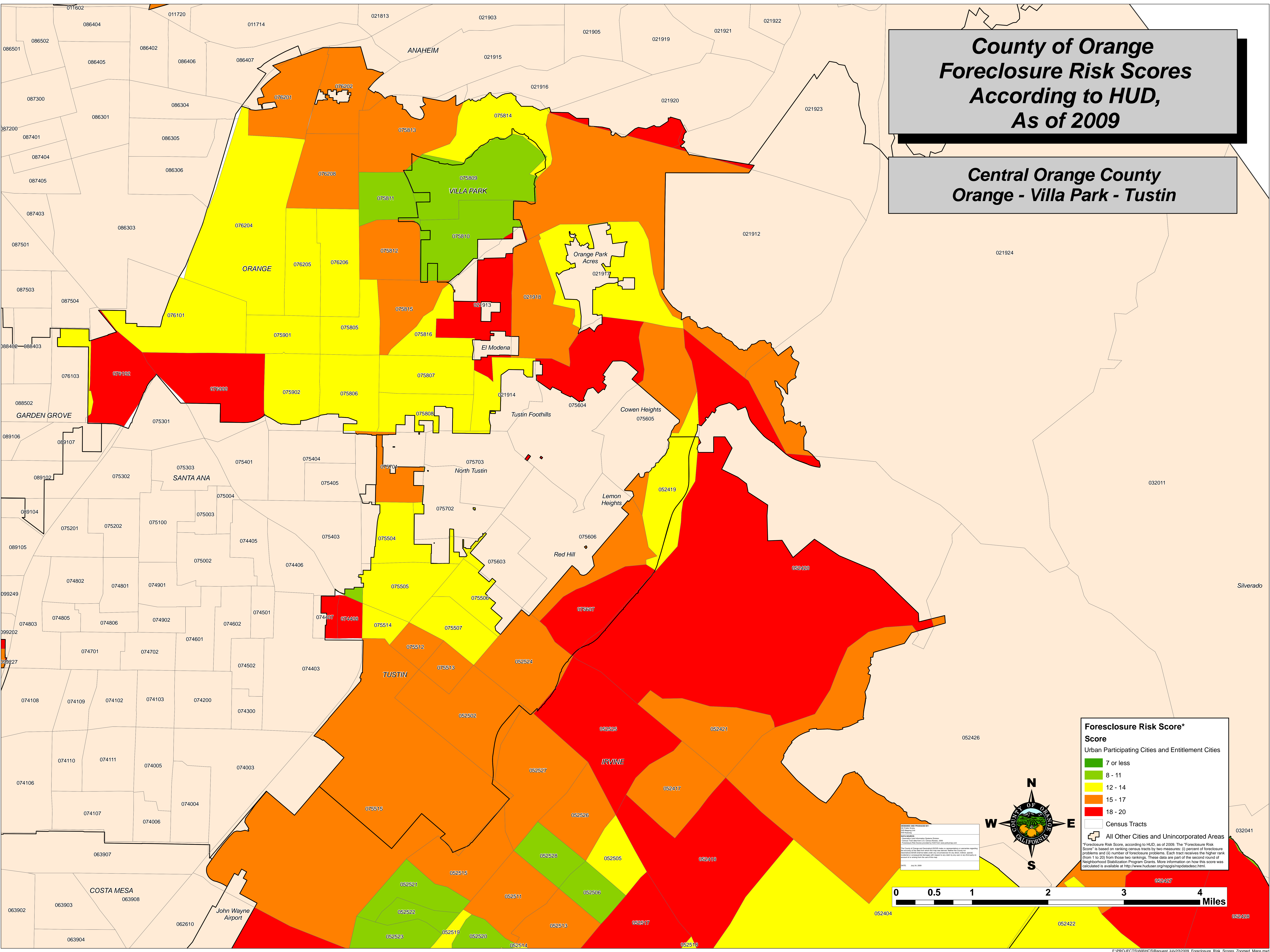


County of Orange Foreclosure Risk Scores According to HUD, As of 2009

Central Orange County Orange - Villa Park - Tustin

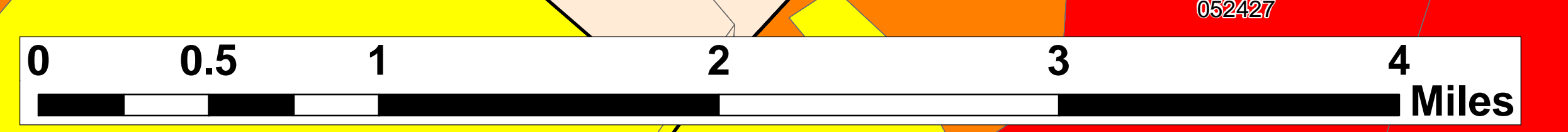
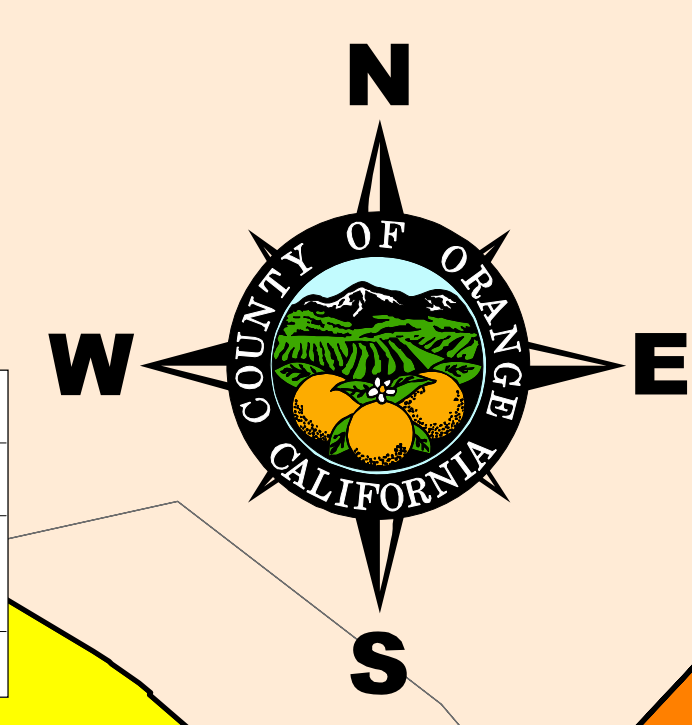


Foreclosure Risk Score*

Score

- 7 or less
- 8 - 11
- 12 - 14
- 15 - 17
- 18 - 20
- Census Tracts
- All Other Cities and Unincorporated Areas

*Foreclosure Risk Score, according to HUD, as of 2009. The "Foreclosure Risk Score" is based on ranking census tracts by two measures: (i) percent of foreclosure problems and (ii) number of foreclosure problems. Each tract receives the higher rank (from 1 to 20) from those two rankings. These data are part of the second round of Neighborhood Stabilization Program Grants. More information on how this score was calculated is available at <http://www.huduser.org/ncsp/ncspdata/sec.html>.



DESIGNED AND PRODUCED BY:
GEOGRAPHIC INFORMATION SYSTEMS
DATA SERVICES
COUNTY OF ORANGE
JULY 2009